

PARTS CATALOGUE

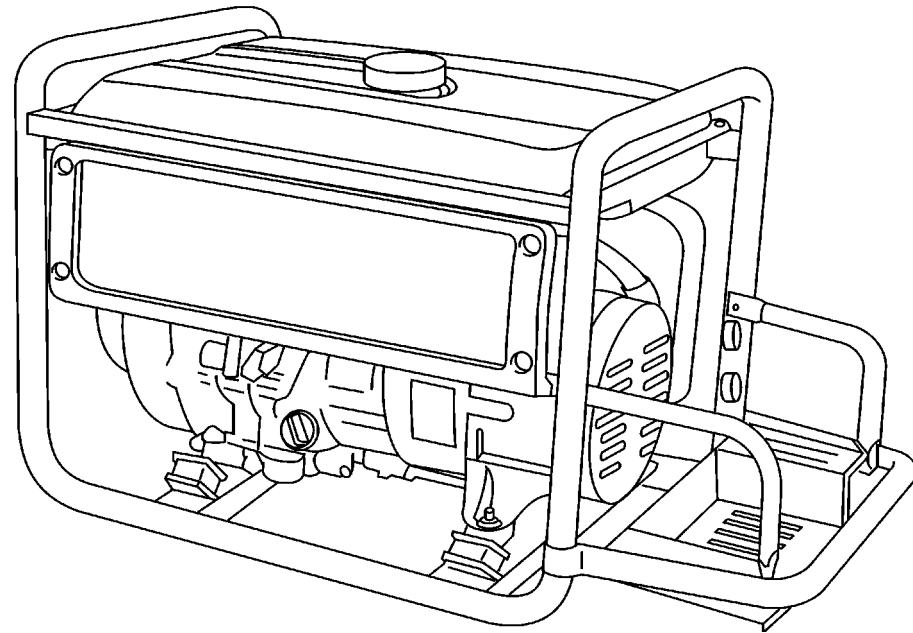
YAMAHA GENERATOR

EF4600DX (7RG2) (120V/240V-60Hz)

EF4600DEX (7RG2) (120V/240V-60Hz) CANADA

YAMAHA
GENUINE
Parts & Accessories

297RG-171E1



A3

FOREWORD

This Parts Catalogue is related to the parts for the model(s) in the below frame. When you are ordering replacement parts, please refer to this Parts Catalogue and quote both part numbers and part names correctly.

1. Modifications or additions which have been made after issue of the Parts Catalogue will be announced in the Yamaha Parts News.
It is advisable that you make necessary corrections to the Parts Catalogue according to the Yamaha Parts News.

2. Abbreviations

The following abbreviations are used in this Parts Catalogue.

"UR" Use specified parts number.

"UN" Use as many as needed.

"AP" Alternate Parts

"LM" Local Made (Parts need to be ordered locally)

"F#" Frame No. (Applicable machine No.)

3. Parts, which are to be supplied in an assembly, are listed with a dot(.) in front of the part name as shown below.

EXAMPLE

CARBURETOR ASSY

.JET, PILOT

.NOZZLE, MAIN

4. Number of component for assembly

The numeral appearing to the right of each component part indicates the quantity of parts for each assembly unit.

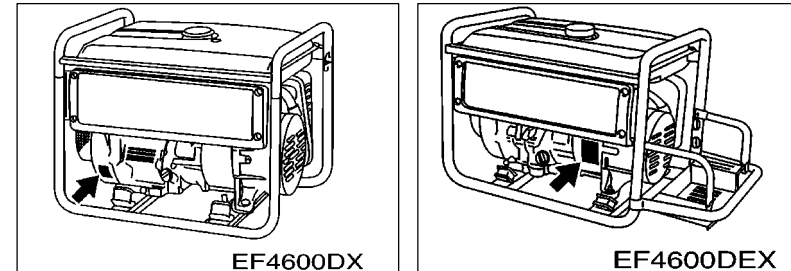
EXAMPLE

PART NO.	DESCRIPTION	Q'TY	REMARKS
2F5-83310-60	FRONT FLASHER LIGHT ASSY	2	
115-83311-60	.BULB (6V-18W)	1	

5. Applicable Starting Serial No. and Color Code

MODEL NAME	MODEL TYPE	FRAME NO.
EF4600DX	7RG2	7RG-240101
EF4600DEX	7RG2	7RG-260101

Frame Serial No.



Color Code	Color Name	Abbreviation	MODEL	Country (destination)
00NJ	FARAWAY BLUE	FWB	7RG2	CANADA

6. Note that the illustrations for reference in finding parts numbers, not to be used for assembling. When assembling, please use the applicable service manual.
7. The asterisk (*) before a reference number indicates modification items after the first edition.

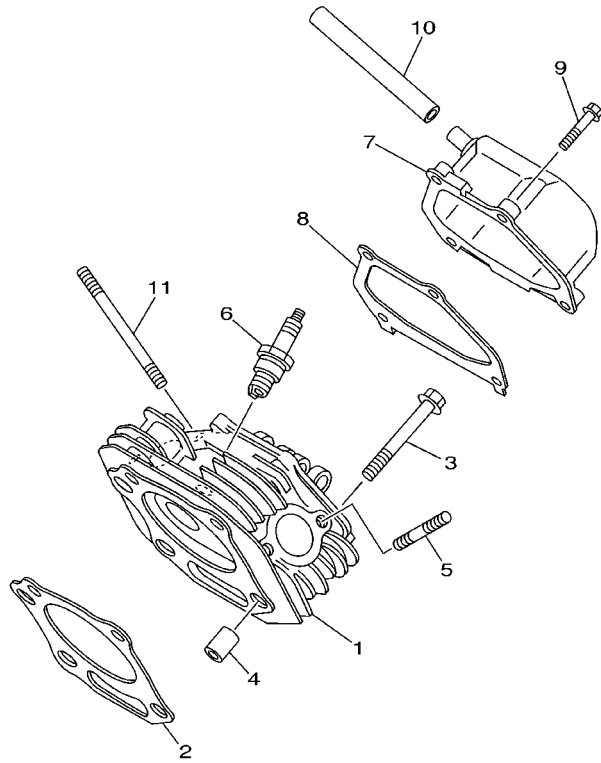


FIG. 1 CYLINDER

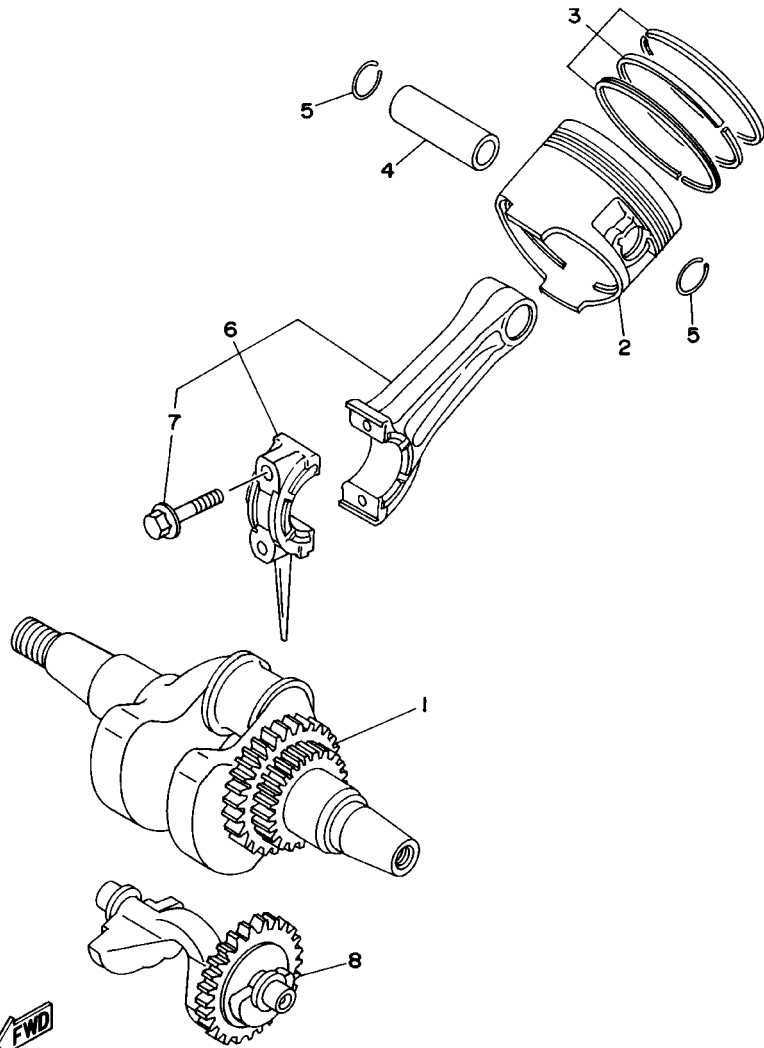
REF. NO.	PART NO.	DESCRIPTION	DX	DEX				REMARKS
1	7RG-11111-01	HEAD, CYLINDER 1	1	1				
2	7RG-11181-02	GASKET, CYLINDER HEAD 1	1	1				
3	95817-10070	BOLT, FLANGE	4	4				
4	99530-14016	PIN, DOWEL	2	2				
5	95627-08618	BOLT, STUD	2	2				
6	94702-00331	PLUG, SPARK (NGK BPR4ES)	1	1				
7	7RH-11190-00	COVER, CYLINDER HEAD 1	1	1				
8	JN6-11193-00	GASKET, HEAD COVER 1	1	1				
9	95827-06030	BOLT, FLANGE	4	4				
10	7RH-11166-00	PIPE, BREATHER 1	1	1				
11	95607-08700	BOLT, STUD	2	2				



7UV2171-9010

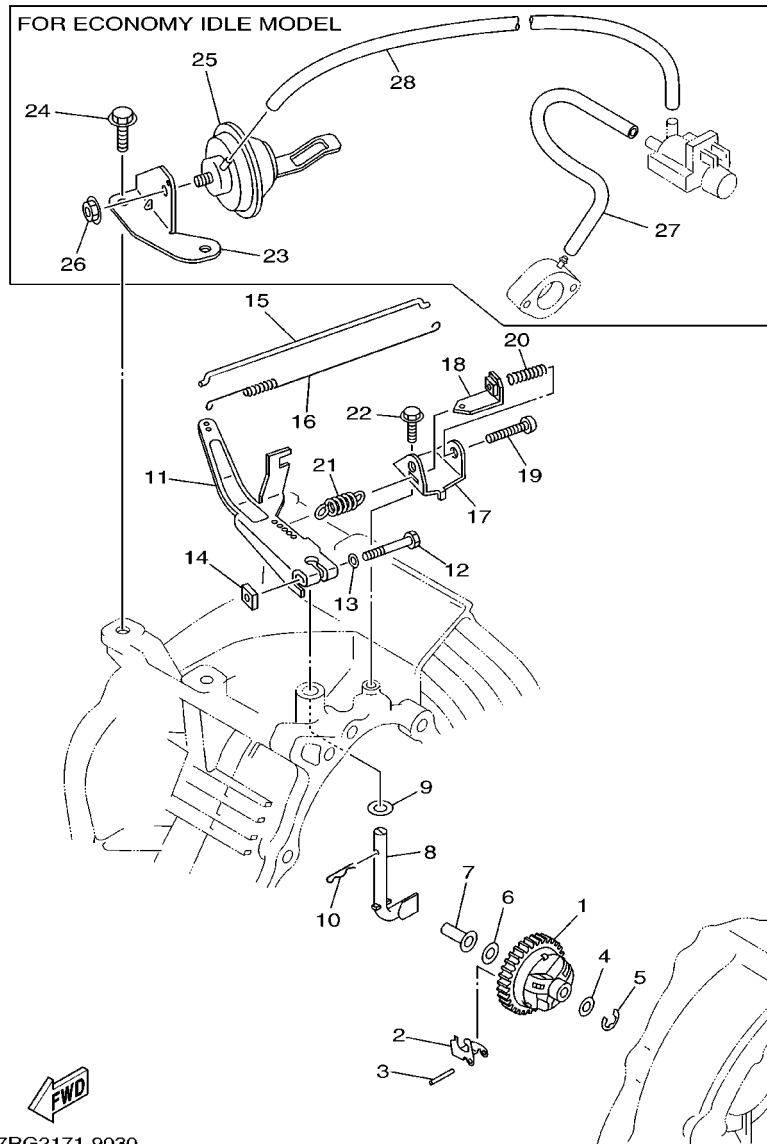
FIG. 2 CRANKSHAFT, PISTON

REF. NO.	PART NO.	DESCRIPTION	DX	DEX			REMARKS
1	7RH-11400-10	CRANKSHAFT ASSY	1	1			
2	JN6-11631-00-A0	PISTON (STD)	1	1			
	JN6-11635-00	PISTON (0.25MM O/S)	1	1			AP
	JN6-11636-00	PISTON (0.50MM O/S)	1	1			AP
3	JN6-11610-00	PISTON RING SET (STD)	1	1			
	JN6-11610-10	PISTON RING SET (0.25MM O/S)	1	1			AP
	JN6-11610-20	PISTON RING SET (0.50MM O/S)	1	1			AP
4	447-11633-00	PIN, PISTON	1	1			
5	93450-21053	CIRCLIP	2	2			
6	JN6-11650-00	CONNECTING ROD ASSY	1	1			
7	JN6-11654-00	.BOLT, CONNECTING ROD	2	2			
8	JN6-11454-00	WEIGHT 1	1	1			



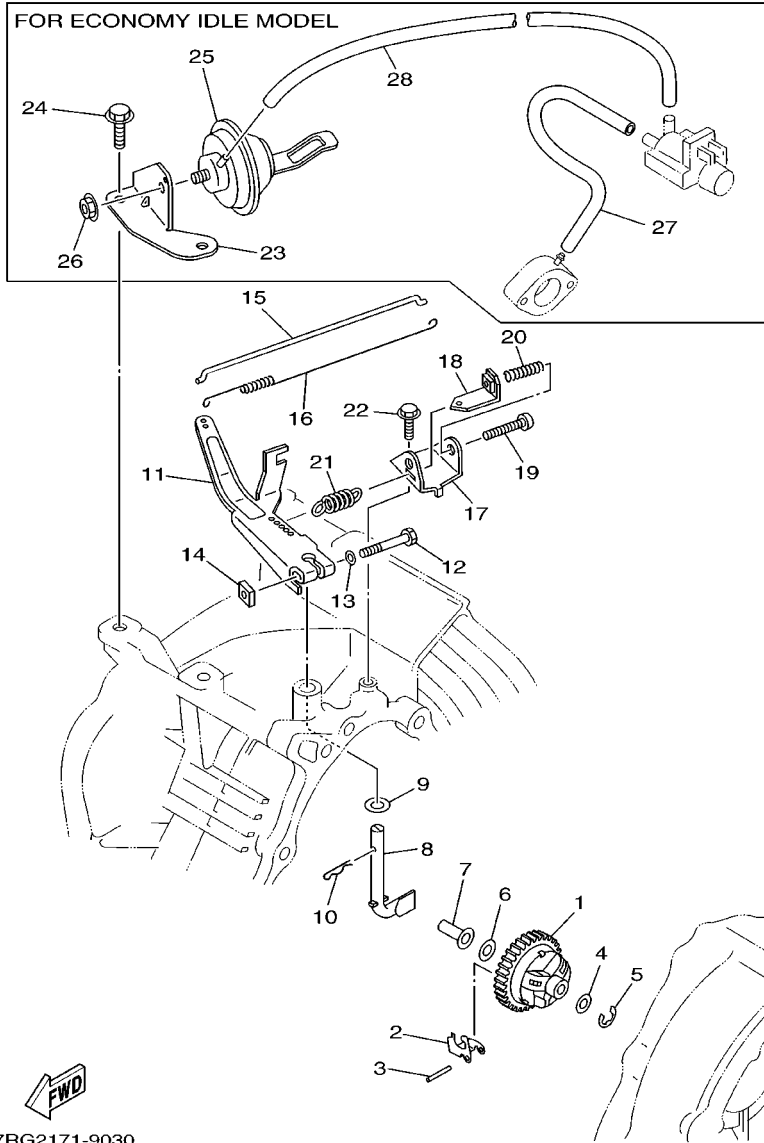
7RG1400-6020

FIG. 3 GOVERNOR



7RG2171-9030

REF. NO.	PART NO.	DESCRIPTION	DX	DEX	REMARKS
1	7RH-11972-00	GEAR, FLYWEIGHT SHAFT	1	1	
2	7RH-11913-00	WEIGHT	3	3	
3	7FK-11914-00	SHAFT, WEIGHT	3	3	
4	90201-065K7	WASHER, PLATE	1	1	
5	93440-06107	CIRCLIP	1	1	
6	90201-067L0	WASHER, PLATE	1	1	
7	7KY-11917-00	COLLAR	1	1	
8	7RH-11922-00	FORK, GOVERNOR	1	1	
9	90201-08092	WASHER, PLATE	2	2	
10	90468-12006	CLIP	1	1	
11	7RH-11901-00	GOVERNOR ASSY	1	1	
12	97027-06030	BOLT	1	1	
13	92907-06600	WASHER, PLATE	1	1	
14	90173-06017	NUT, SQUARE	1	1	
15	7RH-11928-00	ROD, LINK	1	1	
16	90506-04458	SPRING, TENSION	1	1	
17	73A-11941-00	STAY	1	1	
18	73A-11931-00	LEVER	1	1	
19	98507-06035	SCREW, PAN HEAD	1	1	
20	90501-10264	SPRING, COMPRESSION	1	1	
21	7RH-11925-00	SPRING, GOVERNOR	1	1	
22	95807-06012	BOLT, FLANGE	1	1	
23	7RH-11998-00	BRACKET 1	1	1	
24	95807-08016	BOLT, FLANGE	2	2	
25	7X6-11960-00	DIAPHRAGM ASSY	1	1	
26	95707-08500	NUT, FLANGE	1	1	
27	7RH-13545-10	HOSE 1	1	1	

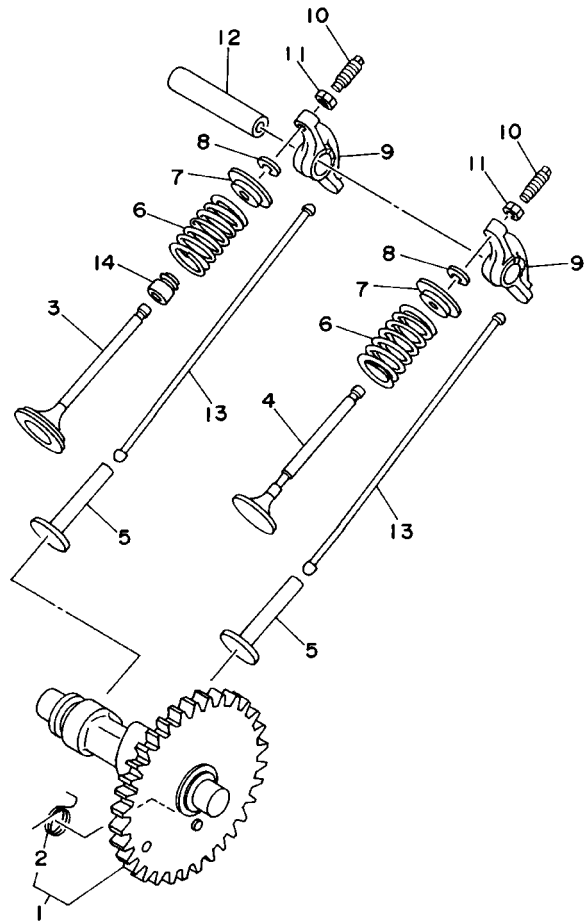


7RG2171-9030

FIG. 3 GOVERNOR

REF. NO.	PART NO.	DESCRIPTION	DX	DEX	REMARKS
28	7RH-13545-00	HOSE 1	1	1	

FIG. 4 CAMSHAFT.VALVE

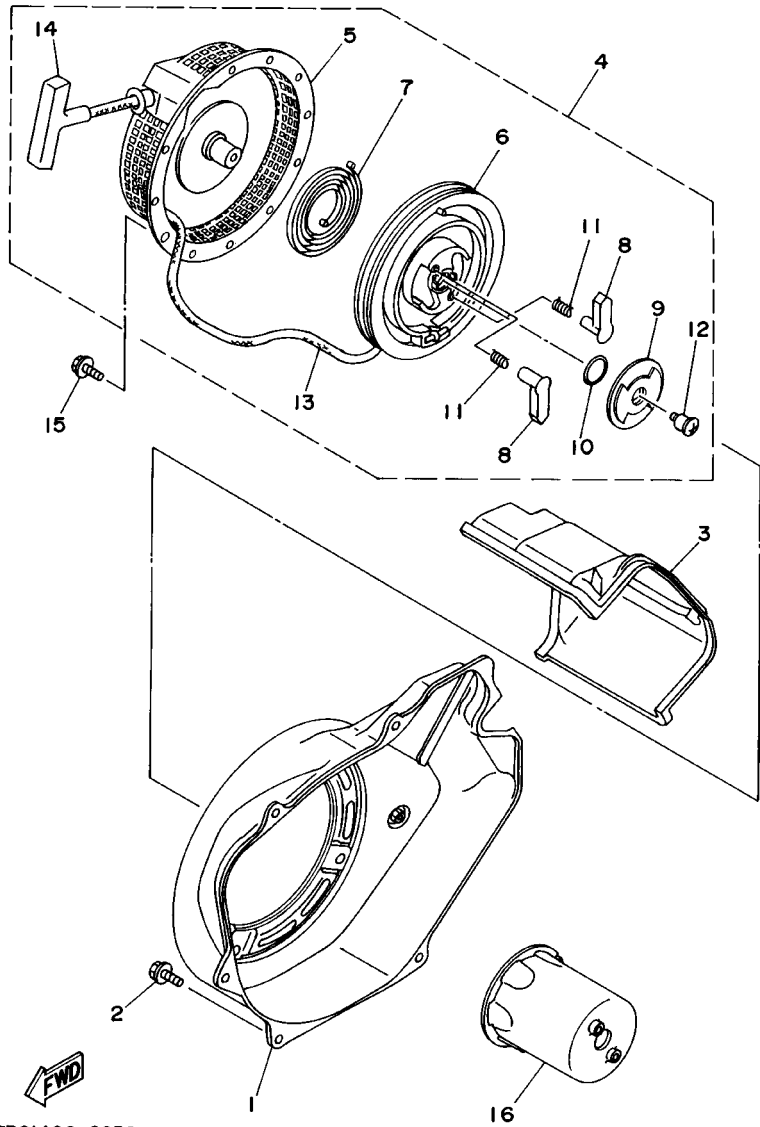


REF. NO.	PART NO.	DESCRIPTION	DX	DEX					REMARKS
1	7RH-12170-00	CAMSHAFT ASSY 1	1	1					
2	7NJ-12287-00	.SPRING, DECOMPRESSION	1	1					
3	JN6-12111-01	VALVE, INTAKE	1	1					
4	7RH-12121-00	VALVE, EXHAUST	1	1					
5	JN6-12153-00	LIFTER, VALVE	2	2					
6	90501-264A9	SPRING, COMPRESSION	2	2					
7	J38-12117-01	RETAINER, VALVE SPRING	2	2					
8	J38-12118-00	COTTER, VALVE	2	2					
9	JN6-12151-00	ARM, VALVE ROCKER	2	2					
10	22F-12159-00	SCREW, VALVE ADJUSTING	2	2					
11	90170-05302	NUT	2	2					
12	J38-12156-00	SHAFT, ROCKER 2	1	1					
13	JN6-12154-00	ROD, VALVE PUSH	2	2					
14	4G0-12119-00	SEAL, VALVE STEM	1	1					


7RG1400-6040

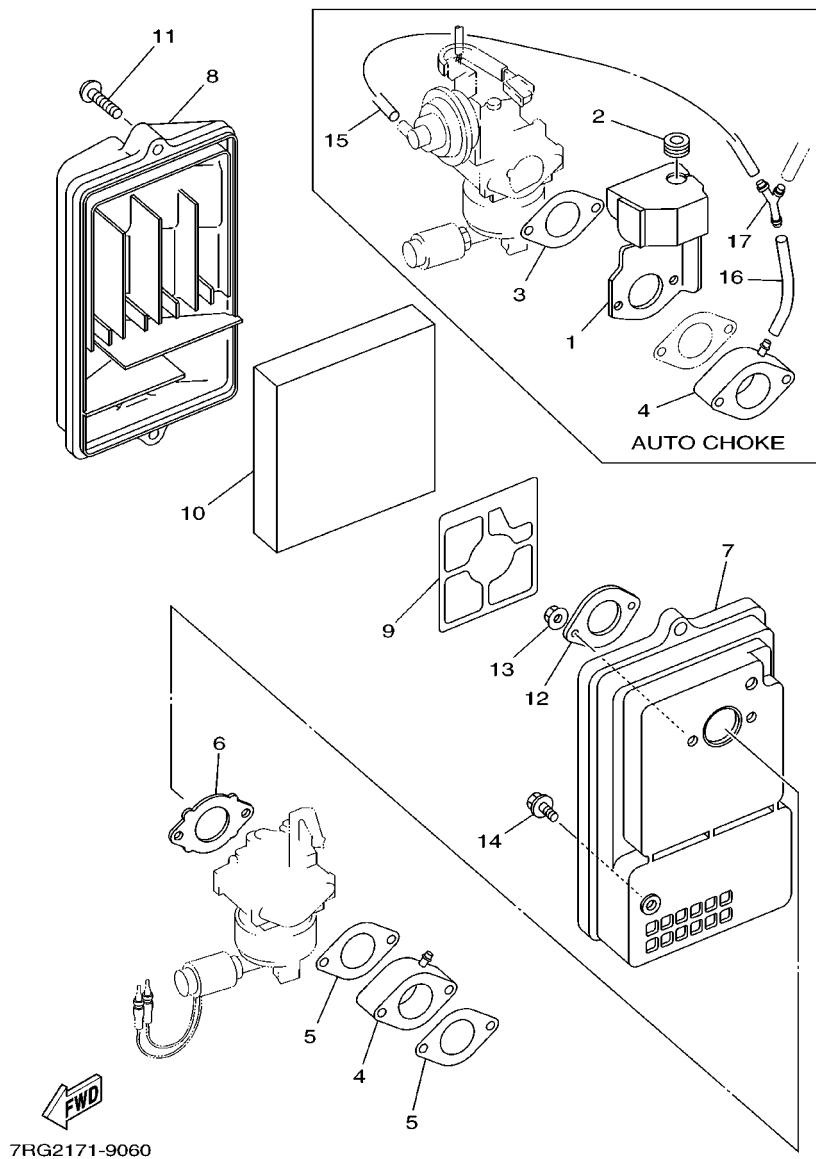
FIG. 5 AIR SHROUD. STARTER

REF. NO.	PART NO.	DESCRIPTION	DX	DEX	REMARKS
1	7RH-12621-00	CASE, FAN	1	1	
2	95807-06012	BOLT, FLANGE	5	5	
3	7RH-12651-00	AIR SHROUD, CYLINDER 1	1	1	
4	7RH-15710-00	STARTER ASSY	1	1	
5	7RH-15711-00	.CASE, STARTER	1	1	
6	7RH-15714-00	.DRUM, SHEAVE	1	1	
7	7RH-15713-00	.SPRING, STARTER	1	1	
8	7RH-15741-00	.PAWL, DRIVE	2	2	
9	7RH-15716-00	.PLATE, DRIVE	1	1	
10	7RH-15715-00	.SPRING, FRICTION	1	1	
11	JK4-15743-00	.SPRING, RETURN	2	2	
12	7NJ-15793-00	.SCREW	1	1	
13	7RH-15751-00	.WIRE, STARTER	1	1	
14	7RH-15755-00	.HANDLE, STARTER	1	1	
15	95807-06008	BOLT, FLANGE	4	4	
16	7RH-15723-00	PULLEY, STARTER	1	1	



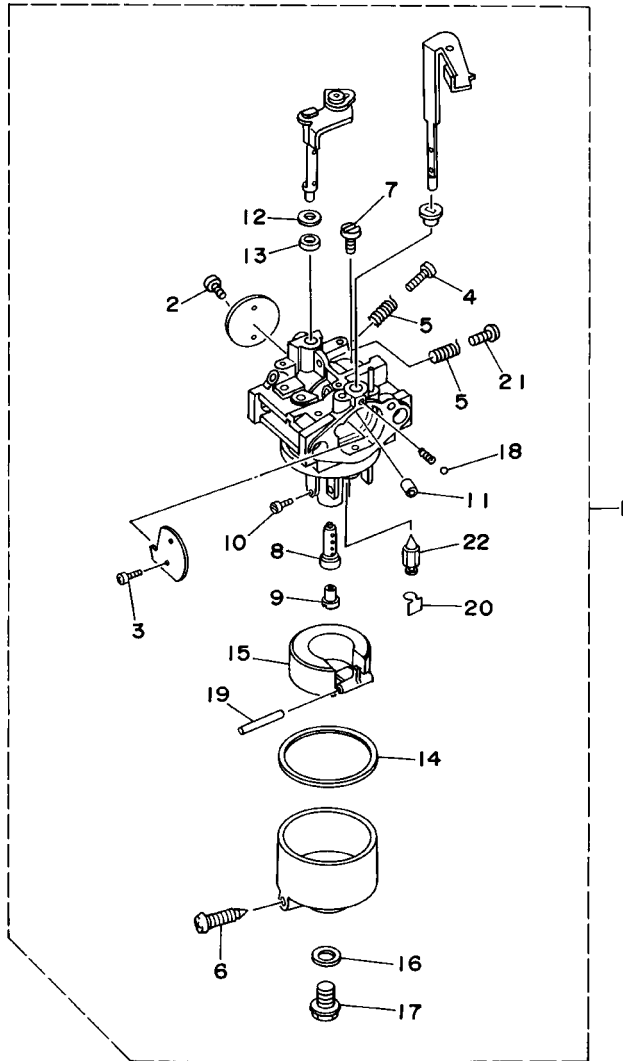
7RG1400-6050

FIG. 6 INTAKE



REF. NO.	PART NO.	DESCRIPTION	DX	DEX	REMARKS
1	7RH-14283-00	COVER, CARBURETOR 1		1	
2	90480-13016	GROMMET		1	
3	7RH-13557-00	GASKET		1	
4	7RH-13596-00	JOINT, CARBURETOR 2	1	1	
5	7RH-13557-00	GASKET	2	2	
6	7RH-13567-00	GASKET	1	1	
7	7RH-14411-01	CASE, AIR CLEANER 1	1	1	
8	7RH-14412-00	CAP, CLEANER CASE 1	1	1	
9	7RH-14468-00	PLATE,ELEMENT FITTING	1	1	
10	7RH-14451-00	ELEMENT, AIR CLEANER	1	1	
11	7RH-14429-00	SCREW	2	2	
12	7LV-14477-00	PLATE	1	1	
13	95707-08500	NUT, FLANGE	2	2	
14	95807-06016	BOLT, FLANGE	1	1	
15	7LV-13546-00	HOSE 2		1	
16	90445-08741	HOSE		1	
17	90413-05013	WAY 3		1	

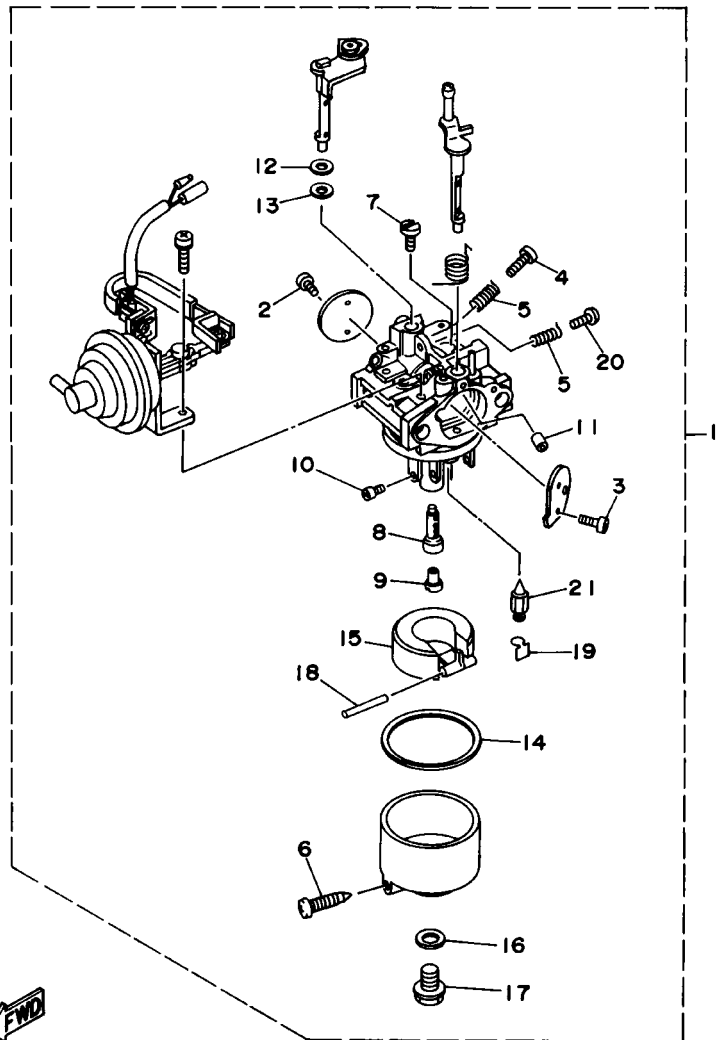
FIG. 7 CARBURETOR



REF. NO.	PART NO.	DESCRIPTION	DX	DEX	REMARKS
1	7RG-14101-10	CARBURETOR ASSY 1	1		
2	7RH-14216-00	.SCREW	2		
3	7RH-14486-00	.SCREW, ROD	2		
4	7LV-14211-00	.SCREW, PILOT ADJUSTING	1		
5	73A-14212-00	.SPRING	2		
6	7E1-14191-00	.PLUG, DRAIN	1		
7	620-14142-62	.JET, PILOT (#62.5)	1		
8	7LW-14941-53	.NOZZLE, MAIN	1		
9	73A-1414G-00	.PIPE, MAIN BREED	1		
10	3G2-1423E-41	.JET, MAIN (#103.8)	1		
11	7U6-24462-00	.PILOT AIR JET	1		
12	4CW-14117-00	.WASHER, PLUG SCREW	1		
13	7X9-14239-00	.SEAL	1		
14	796-14184-00	.GASKET, FLOAT CHAMBER	1		
15	JN6-14185-00	.FLOAT	1		
16	127-14198-00	.GASKET	1		
17	7RG-14162-00	.BOLT, HOLDING	1		
18	93501-08001	.BALL	1		
19	22F-14186-00	.PIN, FLOAT	1		
20	7EG-14159-00	.CLIP	1		
21	1WG-14922-00	.SCREW, THROTTLE	1		
22	73A-14150-00	.NEEDLE ASSY	1		

7RGI400-6070

FIG. 8 CARBURETOR 1

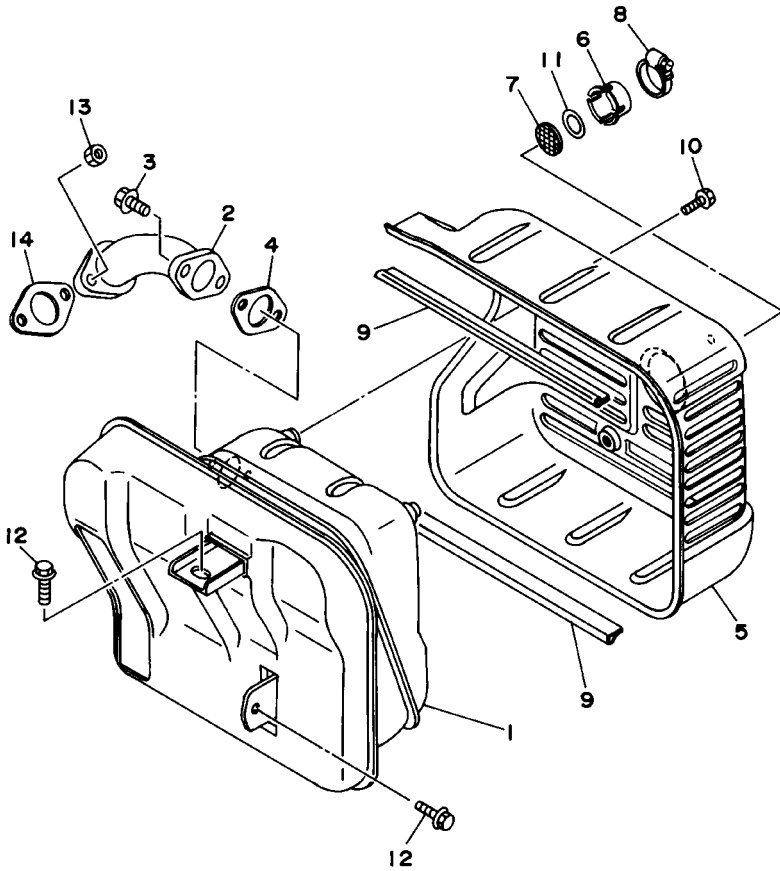


REF. NO.	PART NO.	DESCRIPTION	DX	DEX	REMARKS
1	7RG-14101-00	CARBURETOR ASSY 1		1	
2	7RH-14216-00	.SCREW		2	
3	7RH-14486-00	.SCREW, ROD		2	
4	7LV-14211-00	.SCREW, PILOT ADJUSTING		1	
5	73A-14212-00	.SPRING		2	
6	7E1-14191-00	.PLUG, DRAIN		1	
7	620-14142-62	.JET, PILOT (#62.5)		1	
8	7LW-14941-53	.NOZZLE, MAIN		1	
9	73A-1414G-00	.PIPE, MAIN BREED		1	
10	3G2-1423E-41	.JET, MAIN (#103.8)		1	
11	7U6-24462-00	.PILOT AIR JET		1	
12	4CW-14117-00	.WASHER, PLUG SCREW		1	
13	7X9-14239-00	.SEAL		1	
14	796-14184-00	.GASKET, FLOAT CHAMBER		1	
15	JN6-14185-00	.FLOAT		1	
16	127-14198-00	.GASKET		1	
17	7RG-14162-00	.BOLT, HOLDING		1	
18	22F-14186-00	.PIN, FLOAT		1	
19	7EG-14159-00	.CLIP		1	
20	1WG-14922-00	.SCREW, THROTTLE		1	
21	73A-14150-00	.NEEDLE ASSY		1	

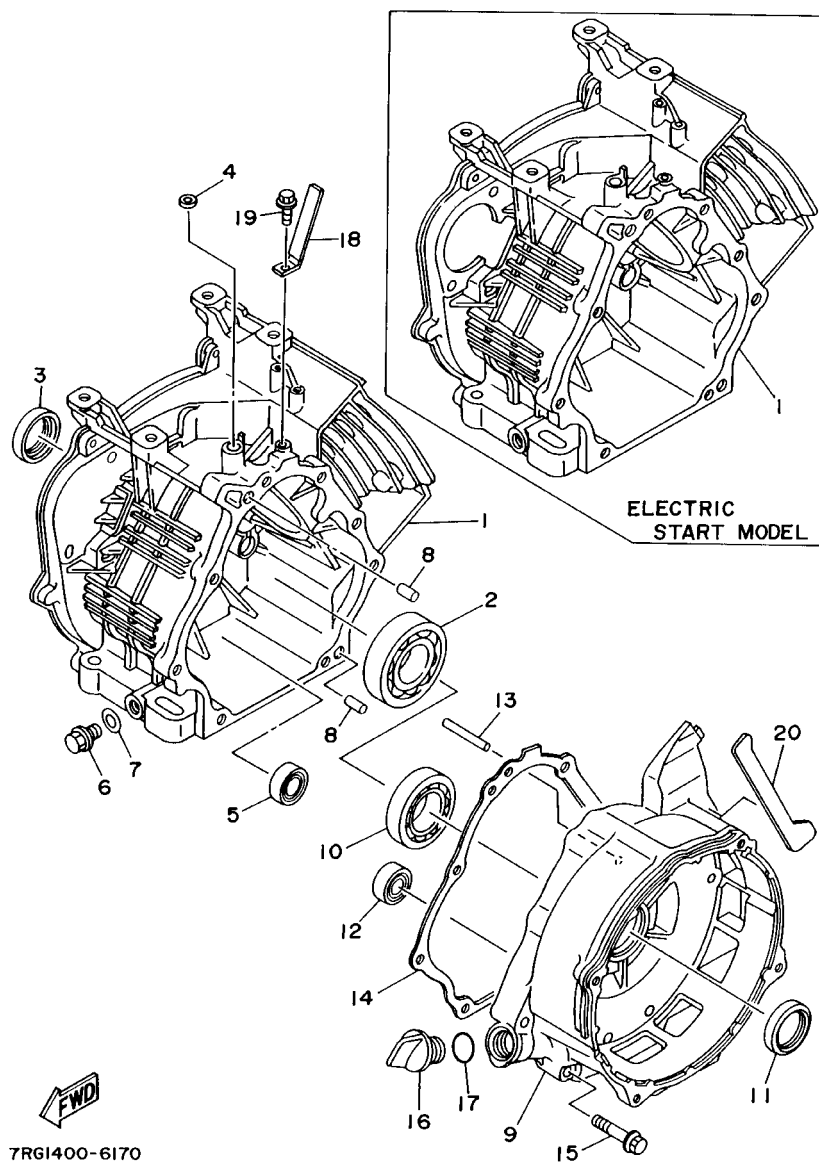
7RG1400-6090

FIG. 9 EXHAUST

REF. NO.	PART NO.	DESCRIPTION	DX	DEX	REMARKS
1	7RH-14711-00	MUFFLER 1	1	1	
2	7RH-14611-00	PIPE, EXHAUST 1	1	1	
3	95807-08020	BOLT, FLANGE	2	2	
4	7RH-14623-00	GASKET, EXHAUST PIPE	1	1	
5	7RH-14718-00	PROTECTOR, MUFFLER 1	1	1	
6	7RH-14799-00	CAP	1	1	
7	7RH-1479E-00	NET, WIRE 2	1	1	
8	90460-31253	CLAMP, HOSE	1	1	
9	7RH-14737-00	DAMPER, MUFFLER	2	2	
10	95807-06008	BOLT, FLANGE	4	4	
11	90201-22793	WASHER, PLATE	1	1	
12	95807-08016	BOLT, FLANGE	2	2	
13	95307-08600	NUT	2	2	
14	7KY-14613-01	GASKET, EXHAUST PIPE	1	1	



7RG1400-6150

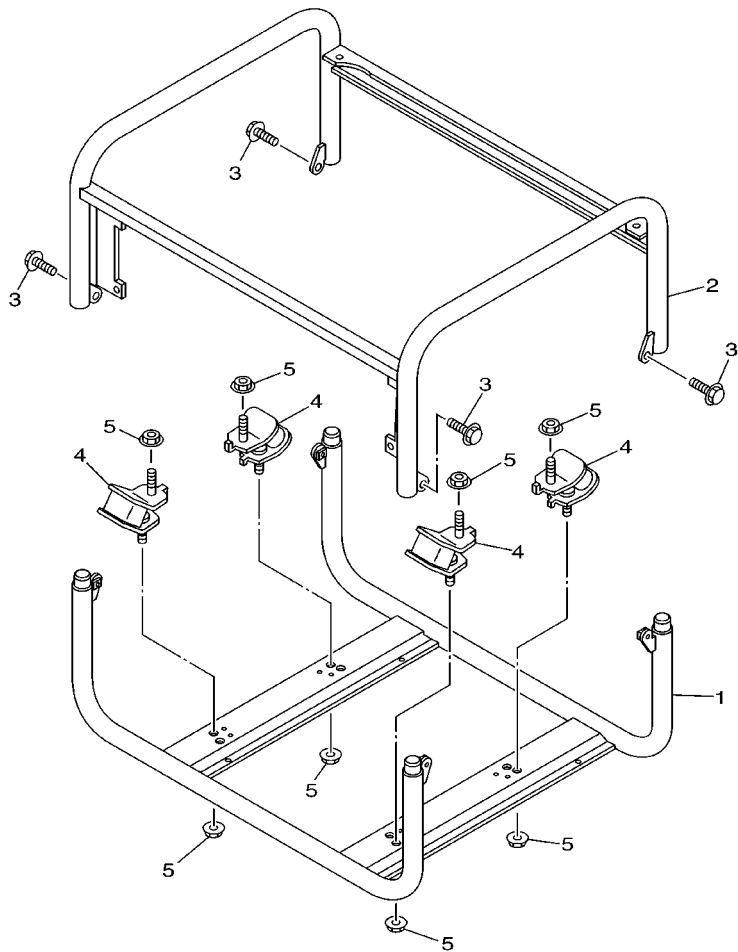


7RG1400-6170

FIG. 10 CRANKCASE

REF. NO.	PART NO.	DESCRIPTION	DX	DEX	REMARKS
1	7RG-15111-00	CRANKCASE 1 (MANUAL START)	1		
	7TS-15111-00	CRANKCASE 1		1	
2	93306-30709	BEARING	1	1	
3	93102-35191	OIL SEAL	1	1	
4	93109-08050	OIL SEAL	1	1	
5	93306-20201	BEARING (B6202)	1	1	
6	90340-12097	PLUG, STRAIGHT SCREW	1	1	
7	812-11198-00	GASKET	1	1	
8	99530-08016	PIN, DOWEL	2	2	
9	7RH-15411-01	COVER, CRANKCASE 1	1	1	
10	93306-20714	BEARING	1	1	
11	93102-35191	OIL SEAL	1	1	
12	93306-20201	BEARING (B6202)	1	1	
13	7RH-11971-00	SHAFT, FLYWEIGHT	1	1	
14	7RH-15451-00	GASKET, CRANKCASE COVER 1	1	1	
15	95817-08045	BOLT, FLANGE	8	8	
16	796-15363-01	PLUG, OIL	1	1	
17	93210-22344	O-RING	1	1	
18	90462-05061	CLAMP	1	1	
19	95807-06010	BOLT, FLANGE	1	1	
20	7RH-14757-00	DAMPER, MUFFLER 2	1	1	

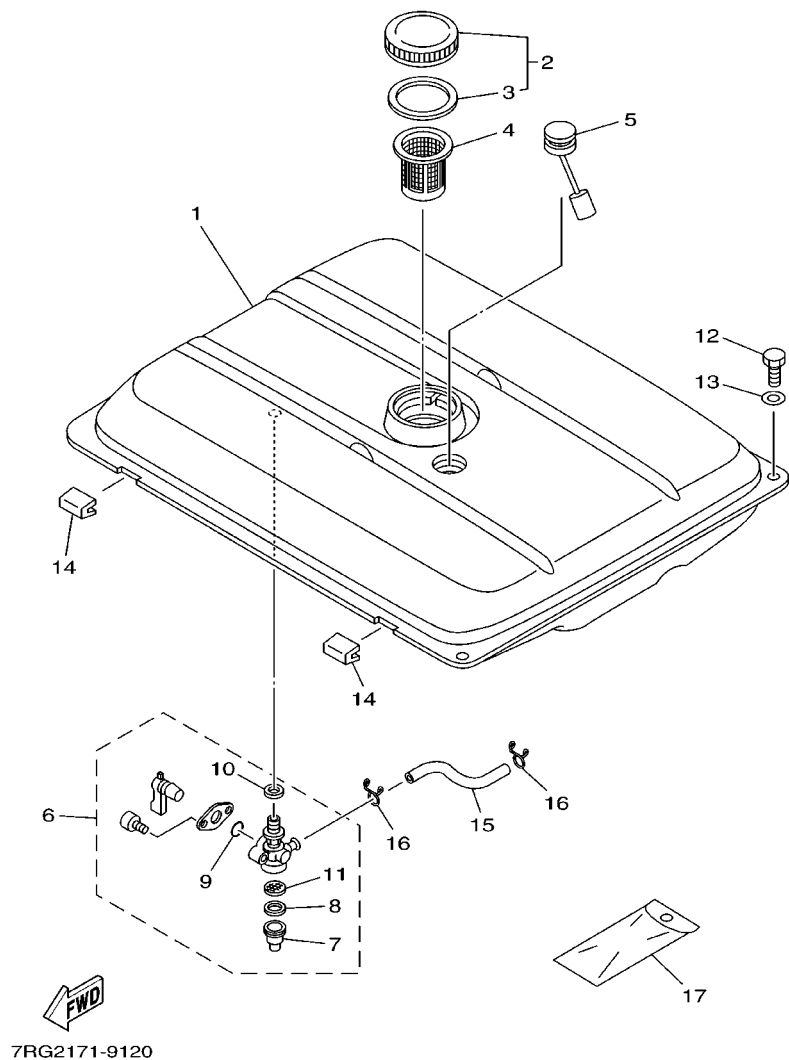
FIG. 11 FRAME



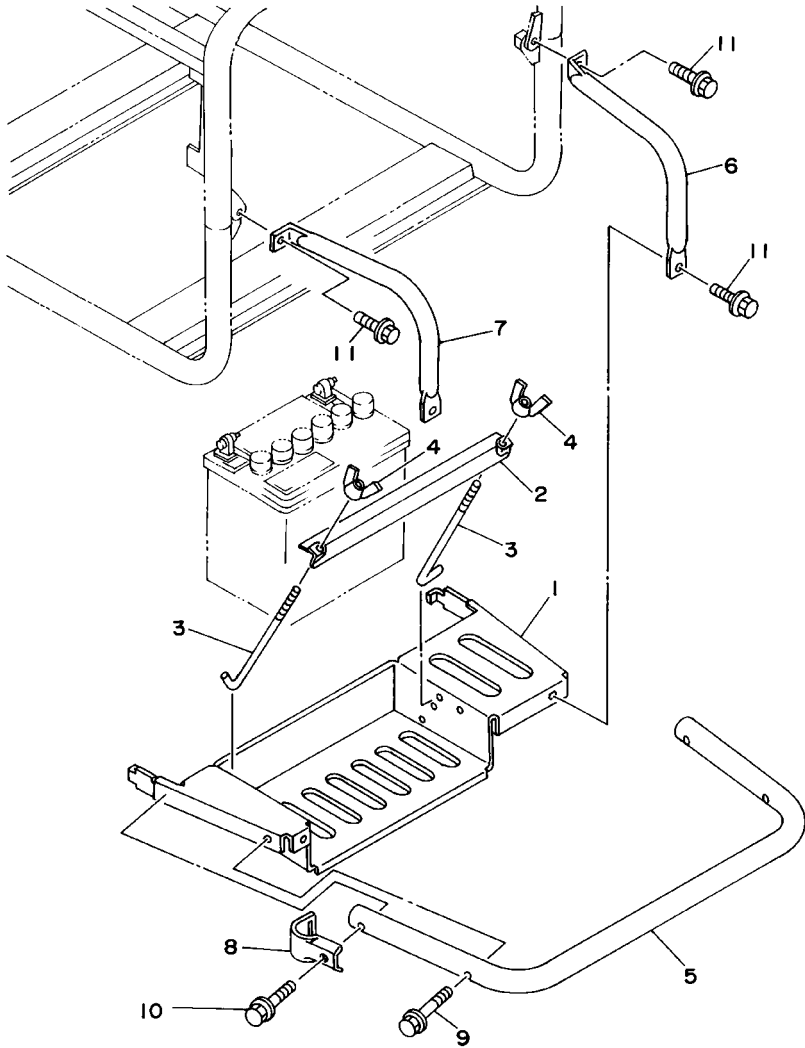
7RG2171-9110

REF. NO.	PART NO.	DESCRIPTION	DX	DEX				REMARKS
1	7RH-22840-00	FRAME COMP.	1	1				
2	7RH-22850-00	FRAME COMP. 2	1	1				
3	95807-06010	BOLT, FLANGE	4	4				
4	7RH-22891-00	INSULATOR, MOUNTING	4	4				
5	95707-10500	NUT, FLANGE	8	8				

FIG. 12 FUEL TANK



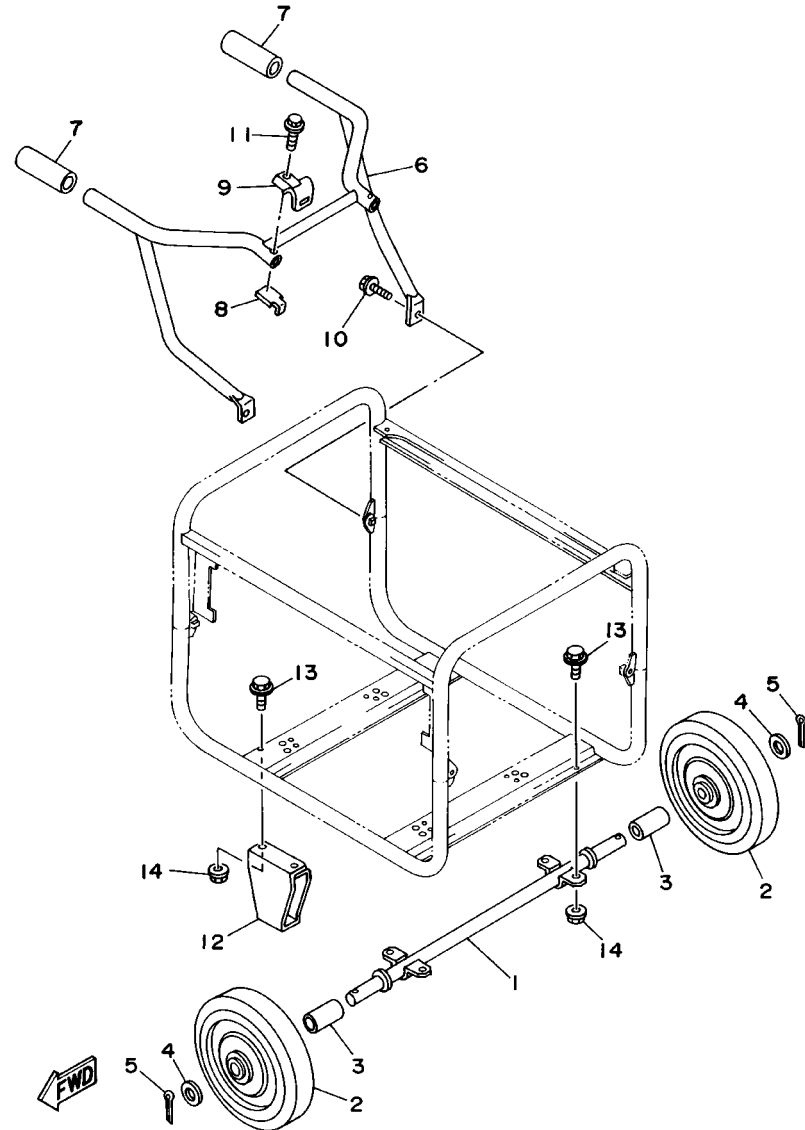
REF. NO.	PART NO.	DESCRIPTION	DX	DEX	REMARKS
1	7RH-24110-00-NJ	FUEL TANK COMP.	1	1	FWB
2	74T-24610-00	CAP ASSY	1	1	
3	796-24612-00	.GASKET, CAP	1	1	
4	630-24167-00	STRAINER	1	1	
5	7F7-85710-02	FUEL LEVEL GAUGE ASSY	1	1	
6	7NJ-24500-01	FUEL COCK ASSY 1	1	1	
7	7J3-24521-00	.CUP, FILTER	1	1	
8	4X8-24565-00	.GASKET	1	1	
9	2W6-24512-00	.O-RING	1	1	
10	7J3-24532-00	.GASKET	1	1	
11	7NJ-24515-00	.NET, FILTER 2	1	1	
12	97007-06012	BOLT	2	2	
13	90201-06380	WASHER, PLATE	2	2	
14	7LG-24181-00	DAMPER, LOCATING 1	2	2	
15	90445-10638	HOSE	1	1	
16	90467-09006	CLIP	2	2	
17	7LV-28100-00	TOOL KIT	1	1	




7RG1400-6210

FIG. 13 BATTERY TRAY

REF. NO.	PART NO.	DESCRIPTION	DX	DEX	REMARKS
1	7RH-82122-00	SEAT, BATTERY		1	
2	J10-82136-00	PLATE, BATTERY FITTING		1	
3	7LP-82133-00	SCREW, FITTING		2	
4	90175-06008	NUT, WING		2	
5	7RH-22836-00	STAY, 3		1	
6	7RH-22838-00	STAY 6		1	
7	7RH-22839-00	STAY 7		1	
8	7RH-22864-00	COVER, SIDE 1		2	
9	95807-06030	BOLT, FLANGE		2	
10	95807-06035	BOLT, FLANGE		2	
11	95807-06012	BOLT, FLANGE		4	

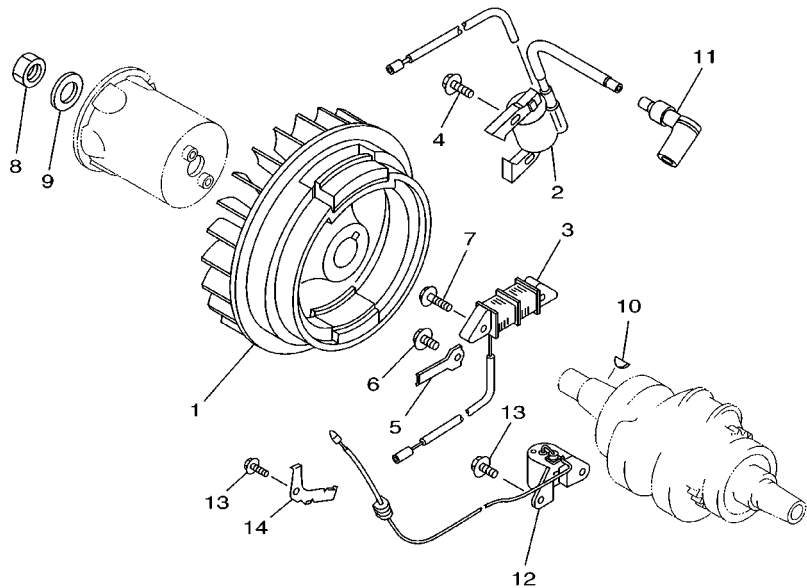
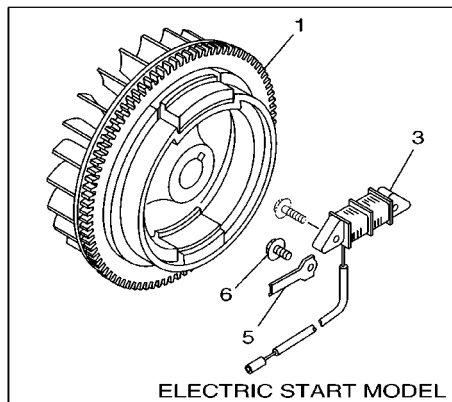


7RG1400-6220

FIG. 14 FRONT WHEEL

REF. NO.	PART NO.	DESCRIPTION	DX	DEX				REMARKS
1	7RH-25381-00	AXLE, WHEEL	1	1				
2	73A-22846-10	CASTER 2	2	2				
3	73A-25322-10	INSERT, SHAFT	2	2				
4	92907-20600	WASHER	2	2				
5	91401-30040	PIN, COTTER	2	2				
6	7RH-26100-00	HANDLE ASSY	1	1				
7	801-26241-01	GRIP	2	2				
8	7RH-2284F-00	PLATE 3	2	2				
9	7RH-22864-00	COVER, SIDE 1	2	2				
10	95807-06014	BOLT, FLANGE	2	2				
11	95807-06035	BOLT, FLANGE	2	2				
12	7LR-27111-01	STAND, MAIN	2	2				
13	95807-08016	BOLT, FLANGE	8	8				
14	95707-08500	NUT, FLANGE	8	8				

FIG. 15 T.C.I.MAGNETO

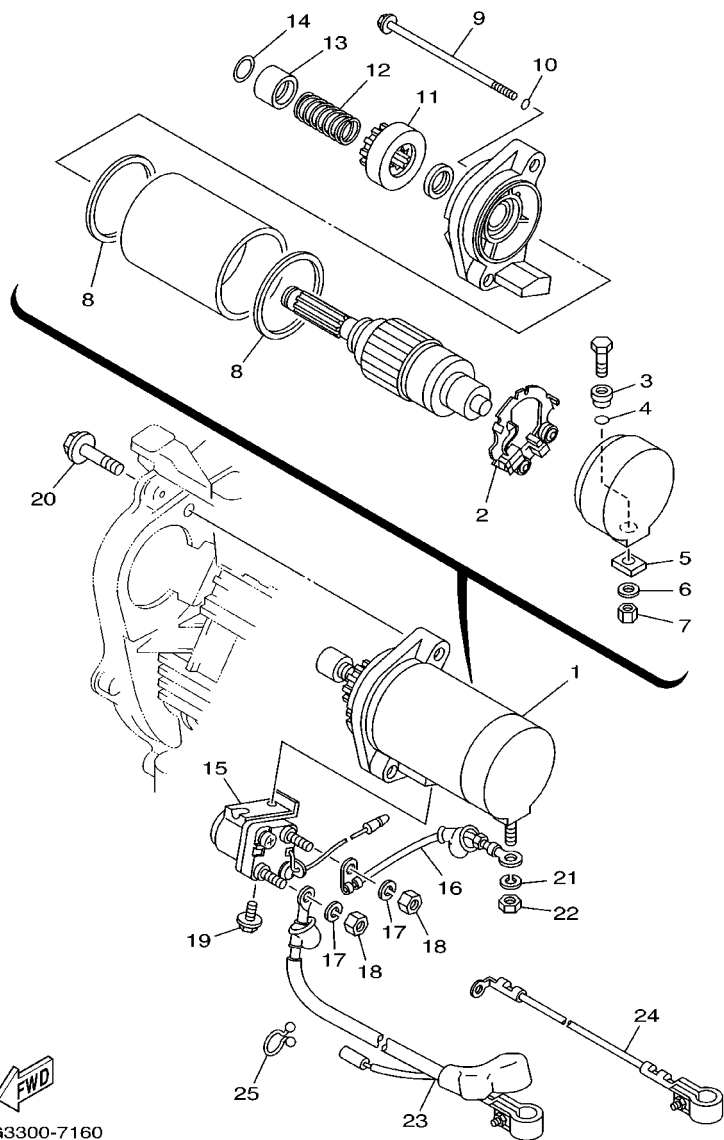


REF. NO.	PART NO.	DESCRIPTION	DX	DEX	REMARKS
1	7RH-85650-10	ROTOR ASSY (MANUAL START)	1		
	7RH-85650-00	ROTOR ASSY (EL. START)		1	
2	7RH-85640-00	T.C.I. UNIT ASSY	1	1	
3	7RH-85521-10	COIL ASSY	1		
	7RH-85521-00	COIL ASSY		1	
4	95880-06020	BOLT, FLANGE	2	2	
5	90462-06232	CLAMP	1	1	
6	95807-06012	BOLT, FLANGE	1	1	
7	95807-06025	BOLT, FLANGE	2	2	
8	90170-18391	NUT	1	1	
9	90201-180T9	WASHER, PLATE	1	1	
10	90280-04052	KEY, WOODRUFF	1	1	
11	JN6-82370-00	PLUG CAP ASSY	1	1	
12	7RH-85720-02	OIL LEVEL GAUGE ASSY	1	1	
13	95827-06012	BOLT, FLANGE	3	3	
14	7NJ-85724-00	CLAMP	1	1	



7RG2171-9150

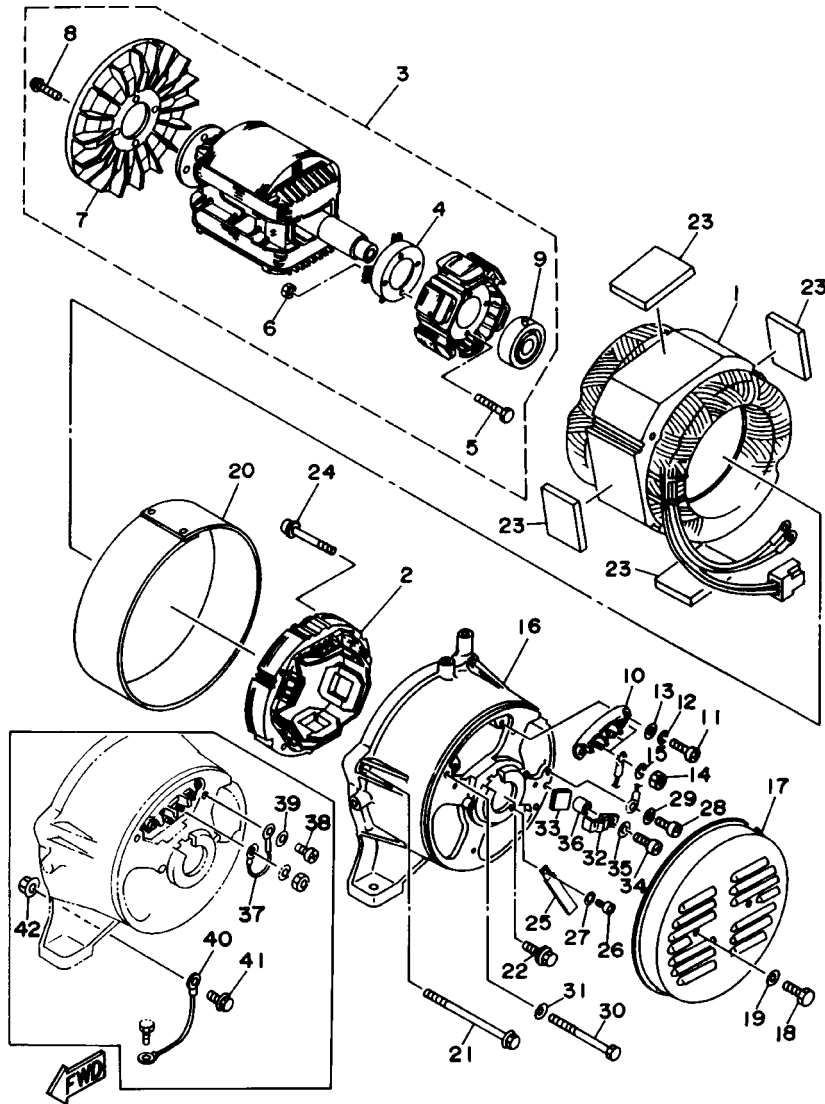
FIG. 16 STARTING MOTOR



7RG3300-7160

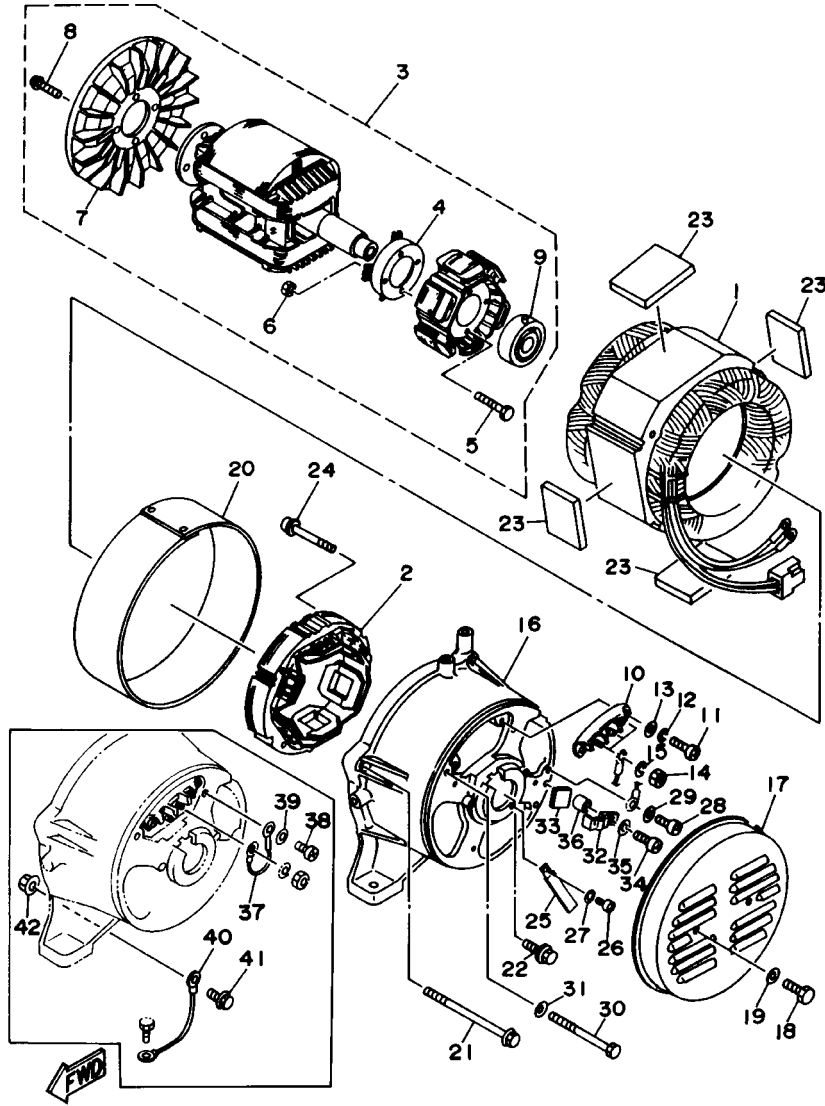
REF. NO.	PART NO.	DESCRIPTION	DX	DEX	REMARKS
1	7RH-81800-00	STARTING MOTOR ASSY		1	
2	7RH-81840-00	.BRUSH HOLDER ASSY		1	
3	7RH-8182G-00	.BUSH, TERMINAL		1	
4	93210-06001	.O-RING		1	
5	7RH-8181L-00	.WASHER, PLAIN		1	
6	92907-061A5	.WASHER		1	
7	95304-06700	.NUT		1	
8	7RH-81861-00	.GASKET		2	
9	7RH-81846-00	.SCREW		1	
10	93210-05098	.O-RING		1	
11	7RH-81807-00	.GEAR ASSY, STARTING MOTOR		1	
12	7KA-81858-00	.SPRING, RETURN		1	
13	7KA-81859-00	.STOPPER, PINION		1	
14	7KA-81833-00	.RING, STOP		1	
15	73A-81940-10	STARTER RELAY ASSY		1	
16	73A-81815-00	CORD, STARTER MOTOR		1	
17	92907-06100	WASHER, SPRING		2	
18	95307-06700	NUT		2	
19	95807-06016	BOLT, FLANGE		1	
20	95807-08035	BOLT, FLANGE		2	
21	92907-06100	WASHER, SPRING		1	
22	95307-06700	NUT		1	
23	73H-82115-01	WIRE, PLUS LEAD		1	
24	73H-82116-00	WIRE, MINUS LEAD		1	
25	90465-18147	CLAMP	1	1	

FIG. 17 GENERATOR 1



7RG1400-6310

REF. NO.	PART NO.	DESCRIPTION	DX	DEX	REMARKS
1	7RH-87150-80	STATOR ASSY	1	1	
2	73A-8712A-01	STATOR EXITER ASSY	1	1	
3	7RH-87160-01	ROTOR ASSY	1	1	
4	7LV-87115-00	.RECTIFIER ASSY 2	1	1	
5	97027-05050	.BOLT	4	4	
6	95307-05600	.NUT	4	4	
7	7LR-87172-01	.FAN, GENERATOR	1	1	
8	90159-06032	.SCREW, WITH WASHER	4	4	
9	93306-37202	.BEARING	1	1	
10	7LR-87220-00	TERMINAL SUB ASSY 1	1	1	
11	98507-05014	SCREW, PAN HEAD	2	2	
12	92907-05100	WASHER, SPRING	2	2	
13	92907-05600	WASHER, PLATE	2	2	
14	95307-05700	NUT	3	3	
15	92907-05100	WASHER, SPRING	3	3	
16	7RH-87131-00	FRAME, REAR	1	1	
17	7RH-87174-00-98	COVER, REAR END	1	1	LGB
18	97007-06012	BOLT	2	2	
19	92907-06300	WASHER	2	2	
20	7RH-87153-80	COVER, STATOR	1	1	
21	95827-06130	BOLT, FLANGE	4	4	
22	7RH-81152-00	BOLT	1	1	
23	7LR-87159-00	SEAL, STATOR	4	4	
24	90159-05091	SCREW, WITH WASHER	4	4	
25	90462-05061	CLAMP	1	1	
26	98507-05010	SCREW, PAN HEAD	1	1	
27	92907-05600	WASHER, PLATE	1	1	

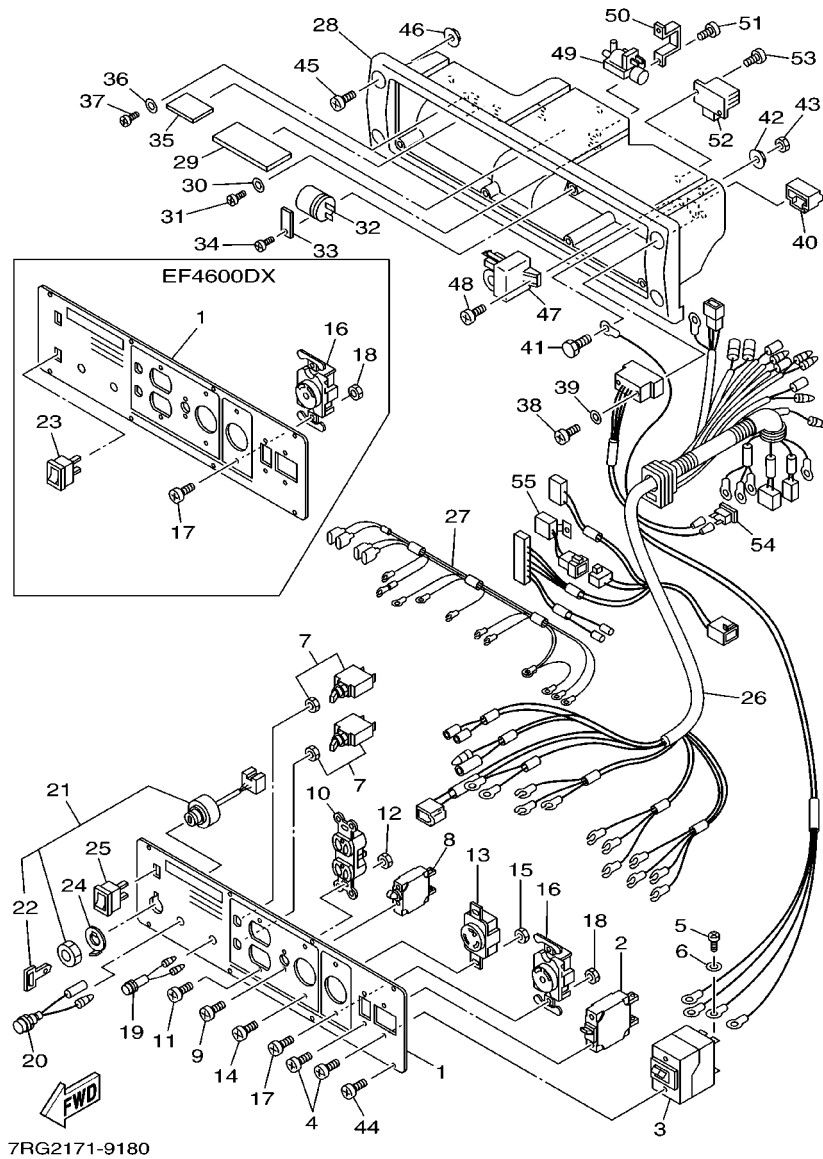


7RG1400-6310

FIG. 17 GENERATOR 1

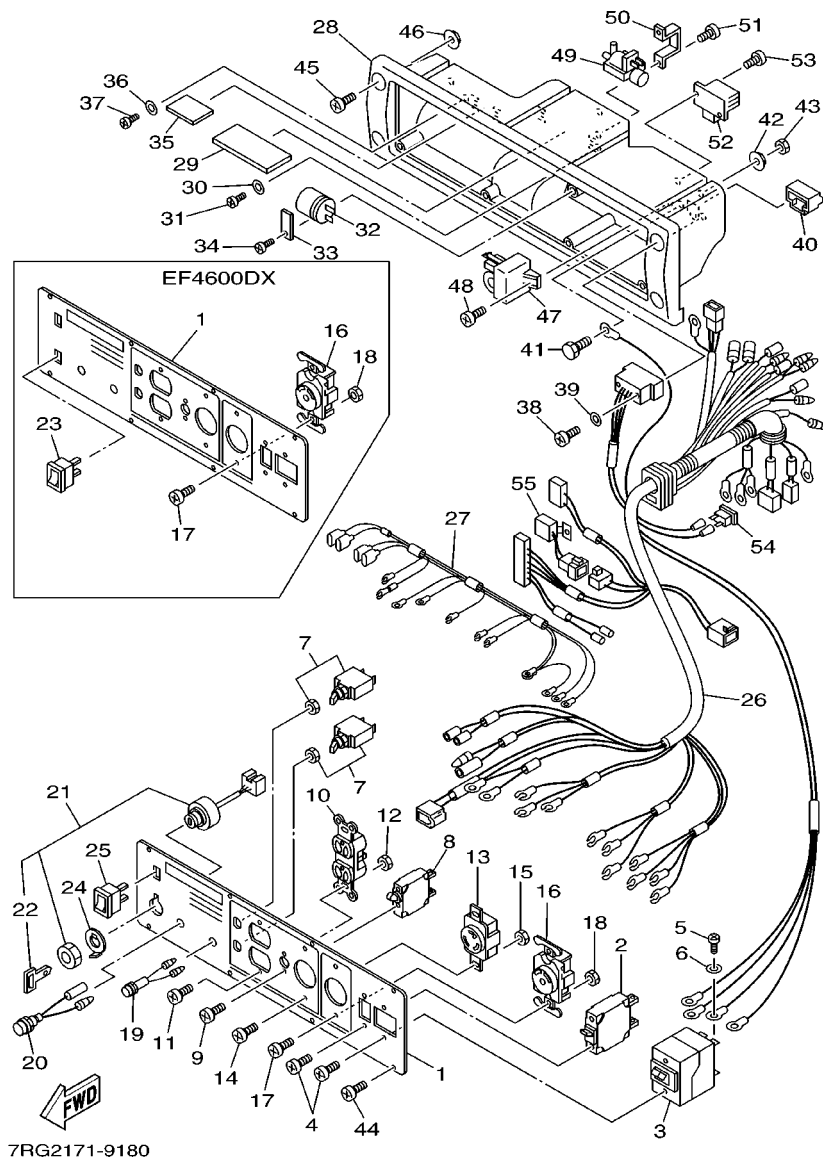
REF. NO.	PART NO.	DESCRIPTION	DX	DEX	REMARKS
28	98507-05010	SCREW, PAN HEAD	1	1	
29	92907-05600	WASHER, PLATE	1	1	
30	90101-06739	BOLT	2	2	
31	92907-06600	WASHER, PLATE	2	2	
32	7J5-88195-00	HOLDER, CONNECTOR	1	1	
33	7LV-8713J-00	DAMPER	1	1	
34	98507-05020	SCREW, PAN HEAD	1	1	
35	92907-05600	WASHER, PLATE	1	1	
36	90387-06N38	COLLAR	1	1	
37	7LR-8722W-80	WIRE, LEAD 6	1	1	
38	98507-05010	SCREW, PAN HEAD	1	1	
39	92907-05600	WASHER, PLATE	1	1	
40	7RH-87139-80	LEAD WIRE ASSY 2	1	1	
41	95880-06010	BOLT, FLANGE	1	1	
42	95780-06500	NUT, FLANGE	1	1	

FIG. 18 CONTROL BOX 1



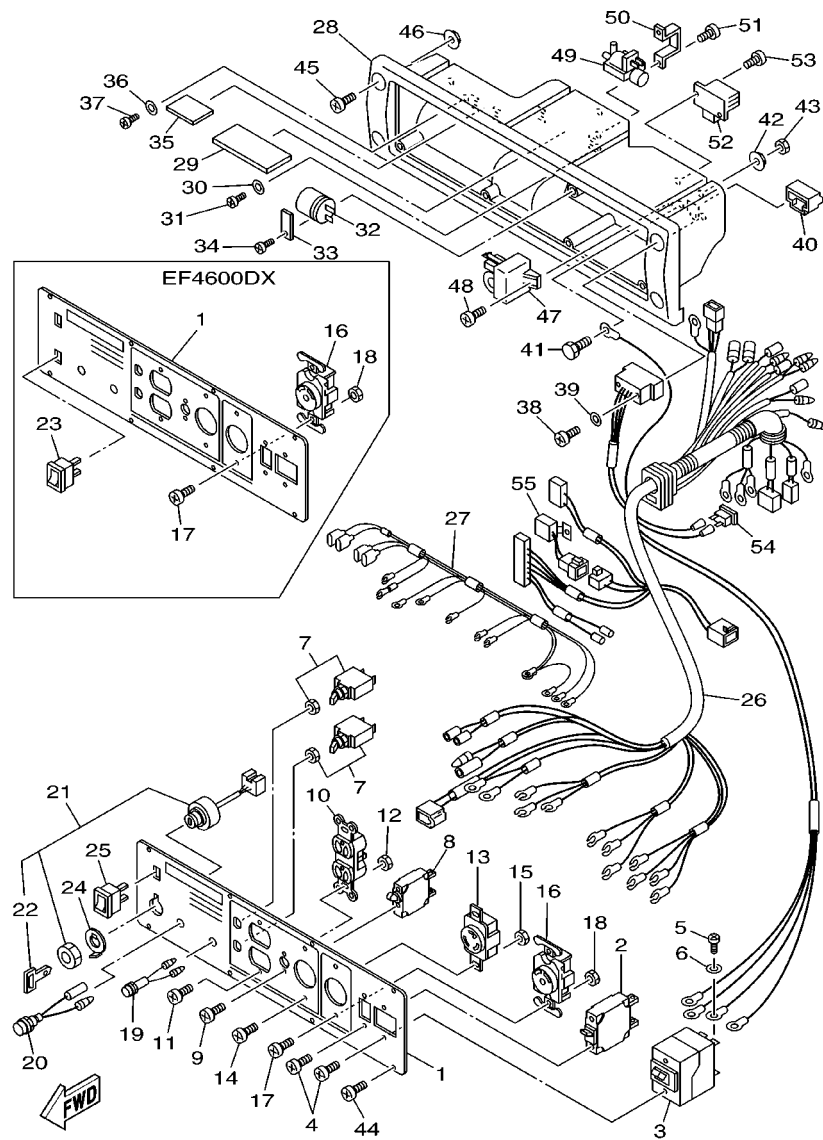
REF. NO.	PART NO.	DESCRIPTION	DX	DEX	REMARKS
1	7RG-87249-80	PLATE	1		TO 7RG-242480
	7RG-87249-81	PLATE	1		FROM 7RG-242481
	7RG-87249-90	PLATE		1	
2	7MF-87204-00	CIRCUIT BREAKER COMP. (35.8A)	1	1	
3	7RG-8720J-80	BREAKER COMP. CIRCUIT	1	1	
4	98507-04005	SCREW, PAN HEAD	4	4	
5	98507-06012	SCREW, PAN HEAD	6	6	
6	92907-06100	WASHER, SPRING	6	6	
7	7RG-87204-N0	BREAKER COMP. (AC240V-15A)	2	2	
8	7LV-8720H-80	BREAKER COMP, CIRCUIT	1	1	
9	98507-03006	SCREW, PAN HEAD	2	2	
10	7RH-87221-80	RECEPTACLE 1	1	1	UR
	7UV-87221-80	RECEPTACLE 1	1	1	UR
11	98507-04012	SCREW, PAN HEAD	2	2	
12	95707-04500	NUT, FLANGE	2	2	
13	73H-87222-91	RECEPTACLE 2	1	1	UR
	7LR-87221-90	CONSENT 1 (WCF63130B02)	1	1	UR
14	98507-04012	SCREW, PAN HEAD	2	2	
15	95707-04500	NUT, FLANGE	2	2	
16	73H-87222-80	RECEPTACLE 2	1		TO 7RG-242480
	73H-87222-70	RECEPTACLE 2	1	1	UR FROM 7RG-242481
	7UV-87222-40	RECEPTACLE (NEMA L14-20R)	1	1	UR
	7LR-87222-90	CONCENT 2 (WCF63420B02)	1	1	UR
17	98507-04012	SCREW, PAN HEAD	2	2	
18	95707-04500	NUT, FLANGE	2	2	
19	7NJ-83530-80	PILOT LIGHT ASSY	1	1	
20	7NJ-85770-00	OIL PILOT LIGHT ASSY	1	1	

FIG. 18 CONTROL BOX 1



REF. NO.	PART NO.	DESCRIPTION	DX	DEX	REMARKS
21	7LP-82510-00	MAIN SWITCH ASSY		1	
22	73A-82511-00	.KEY, MAIN SWITCH		1	
23	7NJ-82550-00	ENGINE STOP SWITCH ASSY	1		
24	7RG-82517-00	WASHER, SPECIAL		1	
25	7NJ-82550-00	ENGINE STOP SWITCH ASSY	1	1	
26	7RG-87226-80	WIRE HARNESS ASSY	1		TO 7RG-242480
	7RG-87226-81	WIRE HARNESS ASSY	1		FROM 7RG-242481
	7RG-87226-90	WIRE HARNESS ASSY		1	
27	7RH-82509-80	WIRE, SUB LEAD	1	1	
28	7RG-87213-80	COVER, CONTROL BOX		1	
	7RH-87213-80	COVER, CONTROL BOX		1	
29	7LU-8722A-00	VOLTAGE REGULATOR ASSY	1	1	
30	90201-03013	WASHER, PLATE	1	1	
31	97707-30512	SCREW, TAPPING	1	1	
32	7RH-87107-00	CONDENSER ASSY	1	1	
33	7LR-86112-00	STAY, SOLENOID	1	1	
34	97707-50512	SCREW, TAPPING	1	1	
35	7LG-85690-00	OIL WARNING UNIT	1	1	
36	90201-03013	WASHER, PLATE	1	1	
37	97707-30512	SCREW, TAPPING	1	1	
38	97707-30512	SCREW, TAPPING		2	
39	92907-03200	WASHER		2	
40	7LP-82599-00	COVER, CONNECTER		1	
41	97080-06020	BOLT	1	1	
42	90179-06511	NUT	1	1	
43	95380-06700	NUT	1	1	
44	97707-40516	SCREW, TAPPING	8	8	

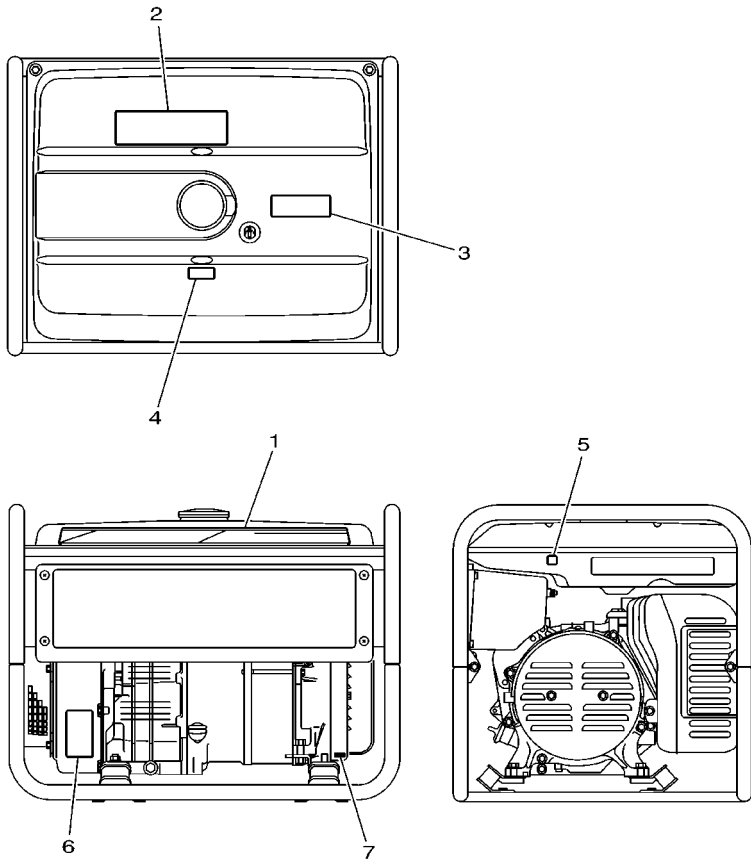
FIG. 18 CONTROL BOX 1



REF. NO.	PART NO.	DESCRIPTION	DX	DEX	REMARKS
45	98907-06014	SCREW, BIND	4	4	
46	95707-06500	NUT, FLANGE	2	2	
47	73M-87286-00	SLOW DOWN UNIT ASSY	1	1	
48	97707-60520	SCREW, TAPPING	1	1	
49	7LR-86120-90	SOLENOID VALVE ASSY	1	1	
50	7RH-86112-00	STAY, SOLENOID	1	1	
51	97707-50512	SCREW, TAPPING	2	2	
52	22J-81960-60	RECTIFIER & REGULATOR ASSY	1	1	
53	97707-50520	SCREW, TAPPING	2	2	
54	42X-82151-00	FUSE (10A-BL)	1	1	
55	7RH-81970-00	RECTIFIER ASSY	1	1	

FIG. 19 LABELS

REF. NO.	PART NO.	DESCRIPTION	DX	DEX	REMARKS
1	7RH-24161-10	EMBLEM 1	1	1	
2	7NJ-24162-10	EMBLEM 2	1	1	
3	7G6-2415A-80	LABEL, CAUTION (RECHECK FUEL)	1	1	ENGLISH/FRENCH /SPANISH
4	63V-82377-50	LABEL(SPARK,IGNITION)	1	1	
5	7NJ-87261-10	EMBLEM 1	1	1	
6	73A-21793-00	ORNAMENT (OIL)	1	1	
7	7NJ-87261-10	EMBLEM 1	1	1	




7RG2171-9190

NUMERICAL INDEX

PART NO.	GRID NO.	PART NO.	GRID NO.	PART NO.	GRID NO.	PART NO.	GRID NO.	PART NO.	GRID NO.	PART NO.	GRID NO.
7RG-11111-01	B - 2	7RH-13567-00	B - 8	7RH-14711-00	B - 11	7NJ-24515-00	B - 14	7F7-85710-02	B - 14	90170-05302	B - 6
7RH-11166-00	B - 2	7RH-13596-00	B - 8	7RH-14718-00	B - 11	7J3-24521-00	B - 14	7RH-85720-02	C - 3	90170-18391	C - 3
7RG-11181-02	B - 2	7RG-14101-00	B - 10	7RH-14737-00	B - 11	7J3-24532-00	B - 14	7RH-85724-00	C - 3	90173-06017	B - 4
7RH-11190-00	B - 2	7RG-14101-10	B - 9	7RH-14757-00	B - 12	4X8-24565-00	B - 14	7NJ-85770-00	C - 7	90175-06008	B - 15
JN6-11193-00	B - 2	4CW-14117-00	B - 9	7RH-1479E-00	B - 11	74T-24610-00	B - 14	7LR-86112-00	C - 8	90179-06511	C - 8
812-11198-00	B - 12		B - 10	7RH-14799-00	B - 11	796-24612-00	B - 14	7RH-86112-00	C - 9	90201-03013	C - 8
7RH-11400-10	B - 3	73A-1414G-00	B - 9	1WG-14922-00	B - 9	73A-25322-10	C - 2	7LR-86120-90	C - 9	90201-06380	B - 14
JN6-11454-00	B - 3		B - 10		B - 10	7RH-25381-00	C - 2	7RH-87107-00	C - 8	90201-065K7	B - 4
JN6-11610-00	B - 3	620-14142-62	B - 9	7LW-14941-53	B - 9	7RH-26100-00	C - 2	7LV-87115-00	C - 5	90201-067L0	B - 4
JN6-11610-10	B - 3		B - 10		B - 10	801-26241-01	C - 2	73A-8712A-01	C - 5	90201-08092	B - 4
JN6-11610-20	B - 3	73A-14150-00	B - 9	7RG-15111-00	B - 12	7LR-27111-01	C - 2	7LV-8713J-00	C - 6	90201-180T9	C - 3
JN6-11631-00-A0	B - 3		B - 10	7TS-15111-00	B - 12	7LV-28100-00	B - 14	7RH-87131-00	C - 5	90201-22793	B - 11
447-11633-00	B - 3	7EG-14159-00	B - 9	796-15363-01	B - 12	7RH-81152-00	C - 5	7RH-87139-80	C - 6	90280-04052	C - 3
JN6-11635-00	B - 3		B - 10	7RH-15411-01	B - 12	7RH-81800-00	C - 4	7RH-87150-80	C - 5	90340-12097	B - 12
JN6-11636-00	B - 3	7RG-14162-00	B - 9	7RH-15451-00	B - 12	7RH-81807-00	C - 4	7RH-87153-80	C - 5	90387-06N38	C - 6
JN6-11650-00	B - 3		B - 10	7RH-15710-00	B - 7	7RH-8181L-00	C - 4	7LR-87159-00	C - 5	90413-05013	B - 8
JN6-11654-00	B - 3	796-14184-00	B - 9	7RH-15711-00	B - 7	73A-81815-00	C - 4	7RH-87160-01	C - 5	90445-08741	B - 8
7RH-11901-00	B - 4		B - 10	7RH-15713-00	B - 7	7RH-8182G-00	C - 4	7RH-87172-01	C - 5	90445-10638	B - 14
7RH-11913-00	B - 4	JN6-14185-00	B - 9	7RH-15714-00	B - 7	7KA-81833-00	C - 4	7RH-87174-00-98	C - 5	90460-31253	B - 11
7FK-11914-00	B - 4		B - 10	7RH-15715-00	B - 7	7RH-81840-00	C - 4	7LV-8720H-80	C - 7	90462-05061	B - 12
7KY-11917-00	B - 4	22F-14186-00	B - 9	7RH-15716-00	B - 7	7RH-81846-00	C - 4	7RG-8720J-80	C - 7		C - 5
7RH-11922-00	B - 4		B - 10	7RH-15723-00	B - 7	7KA-81858-00	C - 4	7MF-87204-00	C - 7	90462-06232	C - 3
7RH-11925-00	B - 4	7E1-14191-00	B - 9	7RH-15741-00	B - 7	7KA-81859-00	C - 4	7RG-87204-N0	C - 7	90465-18147	C - 4
7RH-11928-00	B - 4		B - 10	JK4-15743-00	B - 7	7RH-81861-00	C - 4	7RG-87213-80	C - 8	90467-09006	B - 14
73A-11931-00	B - 4	127-14198-00	B - 9	7RH-15751-00	B - 7	73A-81940-10	C - 4	7RH-87213-80	C - 8	90468-12006	B - 4
73A-11941-00	B - 4		B - 10	7RH-15755-00	B - 7	22J-81960-60	C - 9	7LU-8722A-00	C - 8	90480-13016	B - 8
7X6-11960-00	B - 4	7LV-14211-00	B - 9	7NJ-15793-00	B - 7	7RH-81970-00	C - 9	7LR-8722W-80	C - 6	90501-10264	B - 4
7RH-11971-00	B - 12		B - 10	73A-21793-00	C - 10	73H-82115-01	C - 4	7LR-87220-00	C - 5	90501-264A9	B - 6
7RH-11972-00	B - 4	73A-14212-00	B - 9	7RH-22836-00	B - 15	73H-82116-00	C - 4	7LR-87221-90	C - 7	90506-04458	B - 4
7RH-11998-00	B - 4		B - 10	7RH-22838-00	B - 15	7RH-82122-00	B - 15	7RH-87221-80	C - 7	91401-30040	C - 2
JN6-12111-01	B - 6	7RH-14216-00	B - 9	7RH-22839-00	B - 15	7LP-82133-00	B - 15	7UV-87221-80	C - 7	92907-03200	C - 8
J38-12117-01	B - 6		B - 10	7RH-2284F-00	C - 2	J10-82136-00	B - 15	7LR-87222-90	C - 7	92907-05100	C - 5
J38-12118-00	B - 6	3G2-1423E-41	B - 9	7RH-22840-00	B - 13	42X-82151-00	C - 9	7UV-87222-40	C - 7	92907-05600	C - 5
4G0-12119-00	B - 6		B - 10	73A-22846-10	C - 2	JN6-82370-00	C - 3	73H-87222-70	C - 7		C - 6
7RH-12121-00	B - 6	7X9-14239-00	B - 9	7RH-22850-00	B - 13	63V-82377-50	C - 10	73H-87222-80	C - 7	92907-061A5	C - 4
JN6-12151-00	B - 6		B - 10	7RH-22864-00	B - 15	7RH-82509-80	C - 8	73H-87222-91	C - 7	92907-06100	C - 4
JN6-12153-00	B - 6	7RH-14283-00	B - 8		C - 2	7LP-82510-00	C - 8	7RG-87226-80	C - 8		C - 7
JN6-12154-00	B - 6	7RH-14411-01	B - 8	7RH-22891-00	B - 13	73A-82511-00	C - 8	7RG-87226-81	C - 8	92907-06300	C - 5
J38-12156-00	B - 6	7RH-14412-00	B - 8	7RH-24110-00-NJ	B - 14	7RG-82517-00	C - 8	7RG-87226-90	C - 8	92907-06600	B - 4
22F-12159-00	B - 6	7RH-14429-00	B - 8	7G6-2415A-80	C - 10	7NJ-82550-00	C - 8	7RG-87249-80	C - 7		C - 6
7RH-12170-00	B - 6	7RH-14451-00	B - 8	7RH-24161-10	C - 10	7LP-82599-00	C - 8	7RG-87249-81	C - 7	92907-20600	C - 2
7NJ-12287-00	B - 6	7RH-14468-00	B - 8	7NJ-24162-10	C - 10	7NJ-83530-80	C - 7	7RG-87249-90	C - 7	93102-35191	B - 12
7RH-12621-00	B - 7	7LV-14477-00	B - 8	630-24167-00	B - 14	7RH-85521-00	C - 3	7NJ-87261-10	C - 10	93109-08050	B - 12
7RH-12651-00	B - 7	7RH-14486-00	B - 9	7LG-24181-00	B - 14	7RH-85521-10	C - 3	73M-87286-00	C - 9	93210-05098	C - 4
7RH-13545-00	B - 5		B - 10	7U6-24462-00	B - 9	7RH-85640-00	C - 3	7J5-88195-00	C - 6	93210-06001	C - 4
7RH-13545-10	B - 4	7RH-14611-00	B - 11		B - 10	7RH-85650-00	C - 3	90101-06739	C - 6	93210-22344	B - 12
7LV-13546-00	B - 8	7KY-14613-01	B - 11	7NJ-24500-01	B - 14	7RH-85650-10	C - 3	90159-05091	C - 5	93306-20201	B - 12
7RH-13557-00	B - 8	7RH-14623-00	B - 11	2W6-24512-00	B - 14	7LG-85690-00	C - 8	90159-06032	C - 5	93306-20714	B - 12

NUMERICAL INDEX

PART NO.	GRID NO.	PART NO.	GRID NO.	PART NO.	GRID NO.	PART NO.	GRID NO.	PART NO.	GRID NO.	PART NO.	GRID NO.
93306-30709	B - 12	97007-06012	B - 14								
93306-37202	C - 5		C - 5								
93440-06107	B - 4	97027-05050	C - 5								
93450-21053	B - 3	97027-06030	B - 4								
93501-08001	B - 9	97080-06020	C - 8								
94702-00331	B - 2	97707-30512	C - 8								
95304-06700	C - 4	97707-40516	C - 8								
95307-05600	C - 5	97707-50512	C - 8								
95307-05700	C - 5		C - 9								
95307-06700	C - 4	97707-50520	C - 9								
95307-08600	B - 11	97707-60520	C - 9								
95380-06700	C - 8	98507-03006	C - 7								
95607-08700	B - 2	98507-04005	C - 7								
95627-08618	B - 2	98507-04012	C - 7								
95707-04500	C - 7	98507-05010	C - 5								
95707-06500	C - 9		C - 6								
95707-08500	B - 4	98507-05014	C - 5								
	B - 8	98507-05020	C - 6								
	C - 2	98507-06012	C - 7								
95707-10500	B - 13	98507-06035	B - 4								
95780-06500	C - 6	98907-06014	C - 9								
95807-06008	B - 7	99530-08016	B - 12								
	B - 11	99530-14016	B - 2								
95807-06010	B - 12										
	B - 13										
95807-06012	B - 4										
	B - 7										
	B - 15										
	C - 3										
95807-06014	C - 2										
95807-06016	B - 8										
	C - 4										
95807-06025	C - 3										
95807-06030	B - 15										
95807-06035	B - 15										
	C - 2										
95807-08016	B - 4										
	B - 11										
	C - 2										
95807-08020	B - 11										
95807-08035	C - 4										
95817-08045	B - 12										
95817-10070	B - 2										
95827-06012	C - 3										
95827-06030	B - 2										
95827-06130	C - 5										
95880-06010	C - 6										
95880-06020	C - 3										

CONTENTS

ENGINE

CYLINDER	B2
CRANKSHAFT. PISTON	B3
GOVERNOR	B4
CAMSHAFT.VALVE	B6
AIR SHROUD. STARTER	B7
INTAKE	B8
CARBURETOR	B9
CARBURETOR 1	B10
EXHAUST	B11
CRANKCASE	B12

CHASSIS

FRAME	B13
FUEL TANK	B14
BATTERY TRAY	B15
FRONT WHEEL	C2
T.C.I.MAGNETO	C3
STARTING MOTOR	C4
GENERATOR 1	C5
CONTROL BOX 1	C7
LABELS	C10

INDEX

NUMERICAL INDEX	M1
-----------------------	----